

ROCKSTAR[Ⓛ]



AUSTRALIAN HARD

AH

NEW

ALTERNATIVE TO:

LRPB TROJAN[Ⓛ] CUTLASS[Ⓛ] CATAPULT[Ⓛ]
YITPI[Ⓛ] AND SCEPTER[Ⓛ]



FARMER TO FARMER
TRADE APPROVED



SOUTHERN ZONE 2020
(SOUTH AUSTRALIA/VICTORIA)



Variety Overview

ROCKSTAR[Ⓛ] is an exceptionally high-yielding, mid-slow spring maturing variety, with a similar maturity to LRPB TROJAN[Ⓛ]. It has an AH classification in the southern zone and is a complex derivative with MACE[Ⓛ] parentage. It delivers exceptional yields and provides a large yield improvement within the mid-slow spring maturity class. ROCKSTAR[Ⓛ] offers an opportunity to maximise earlier sowing opportunities and spread flowering windows during critical spring stress periods.

ROCKSTAR[Ⓛ] has good stem rust (MR), yellow leaf spot (MRMS) and stripe rust (MRMS) resistance. It has a good grain size, good test weight and has a moderate plant height, being similar to MACE[Ⓛ]. ROCKSTAR[Ⓛ] is an excellent varietal alternative to LRPB TROJAN[Ⓛ], YITPI[Ⓛ], and CUTLASS[Ⓛ].

ROCKSTAR[Ⓛ] is available for planting from local resellers and Seedclub members.

The AH wheat that rocks till late

Variety at a glance



EXCELLENT
YIELD AND YIELD
STABILITY



GOOD
YELLOW LEAF SPOT
RESISTANCE
(MRMS)



GOOD
STRIPE RUST
RESISTANCE
(MRMS)



MATURITY:
MID-SLOW
SPRING



GOOD GRAIN
SIZE

For more information please contact:

VIC: Katherine Munn ☎ 0436 801 161 @ kmunn@intergrain.com

VIC: Ash Brooks ☎ 0476 020 451 @ abrooks@intergrain.com

SA: Josh Reichstein ☎ 0422 235 537 @ jreichstein@intergrain.com

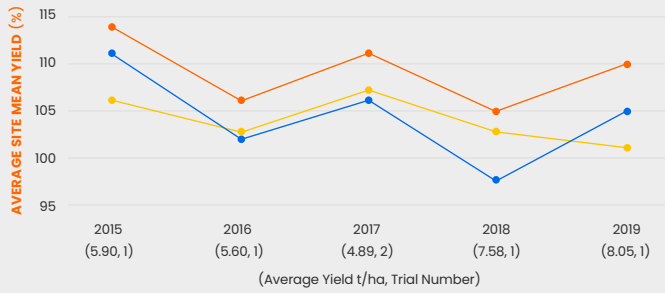
PLANT FEATURES & DISEASE

Variety	Variety Features				Disease							
	Classification - Southern Zone	Maturity	Coleoptile	Plant Height	Stripe Rust	Stem Rust	Leaf Rust	Yellow Leaf Spot	Powdery Mildew	CCN	Septoria Tritici	Black Point
ROCKSTAR [Ⓛ]	AH	Mid-Slow	Medium	Medium	MRMS	MR	S	MRMS	S	MSS	MSS	MS
CATAPULT [Ⓛ]	AH	Mid-Slow		Medium	MRMS	MR	SVS	MRMS	S	R	MSS	MSS
CUTLASS [Ⓛ]	APW	Slow	Medium-Long	Medium-Tall	MS	R	R	MSS	S	MR	MSS	MS
LRPB TROJAN [Ⓛ]	APW	Mid-Slow	Medium	Medium	MSS	MRMS	MR/MS	MSS	S	MS	MS	MS
SCEPTER [Ⓛ]	AH	Mid	Medium-Short	Medium	MSS	MRMS	MSS	MRMS	SVS	MRMS	S	MS
YITPI [Ⓛ]	AH	Slow	Medium	Medium-Tall	MS	S	S	SVS	MS**	MR	MSS	MS

Source: 2019 NVT Pathology consensus disease ratings. R = Resistant, RMR = Resistant to Moderately Resistant, MR = Moderately Resistant, MRMS = Moderately Resistant to Moderately Susceptible, MS = Moderately Susceptible, MSS = Moderately Susceptible to Susceptible, S = Susceptible, SVS = Susceptible to Very Susceptible, VS = Very Susceptible. * Pathotype dependent, () = Higher disease at some sites, p= provisional rating. **2018 NVT Pathology consensus disease rating. **Variety Features Source:** InterGrain wheat breeding. **Powdery Mildew:** Ratings are based on 2019 SA NVT data.

SOUTH AUSTRALIA – YIELD PERFORMANCE

EARLY SEASON



2015-19 SA predicted NVT early season MET yield performance, represented annually as a % of average site mean yield

(Data accessed from the NVT Online website on 06/02/2020)



2015-19 SA predicted NVT early season MET yield performance, represented by yield environment as a % of site mean yield

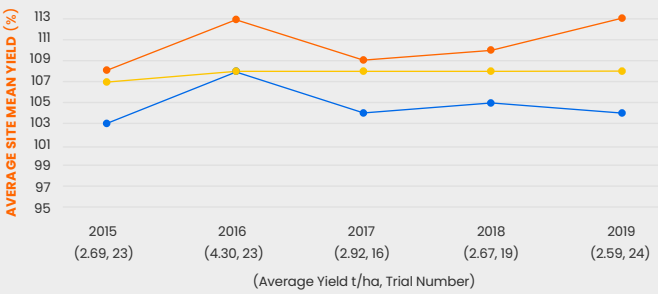
(Brackets indicate number of trials)

(Data accessed from the NVT Online website on 06/02/2020)



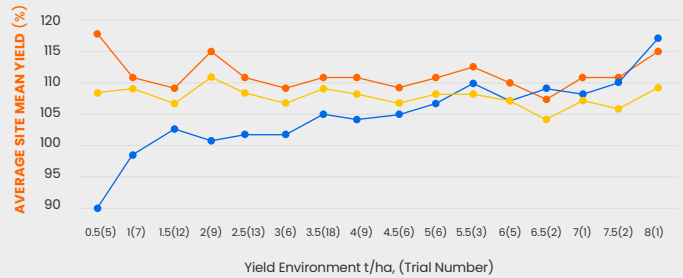
SOUTH AUSTRALIA – YIELD PERFORMANCE

MAIN SEASON



2015-19 SA predicted NVT main season MET yield performance, represented annually as a % of average site mean yield

(Data accessed from the NVT Online website on 06/02/2020)



2015-19 SA predicted NVT main season MET yield performance, represented by yield environment as a % of site mean yield

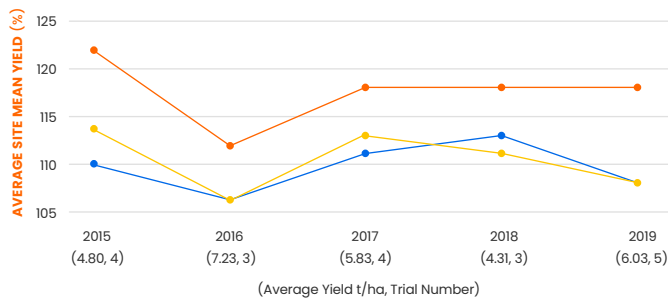
(Brackets indicate number of trials)

(Data accessed from the NVT Online website on 06/02/2020)



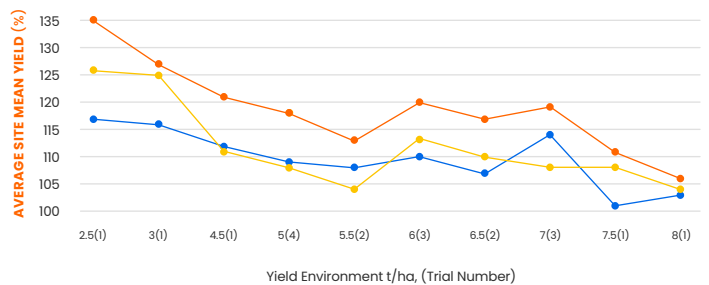
VICTORIA – YIELD PERFORMANCE

EARLY SEASON



2015-19 VIC predicted NVT early season MET yield performance, represented annually as a % of average site mean yield

(Data accessed from the NVT Online website on 05/02/2020)



2015-19 VIC predicted NVT early season MET yield performance, represented by yield environment as a % of site mean yield

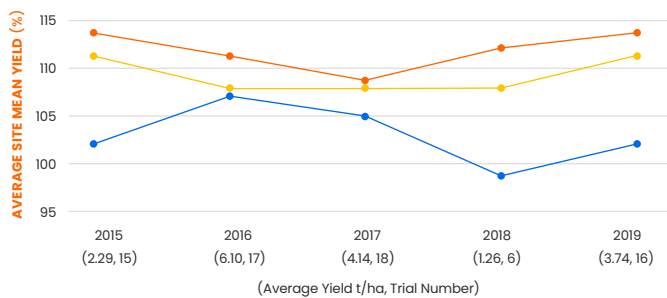
(Brackets indicate number of trials)

(Data accessed from the NVT Online website on 06/02/2020)



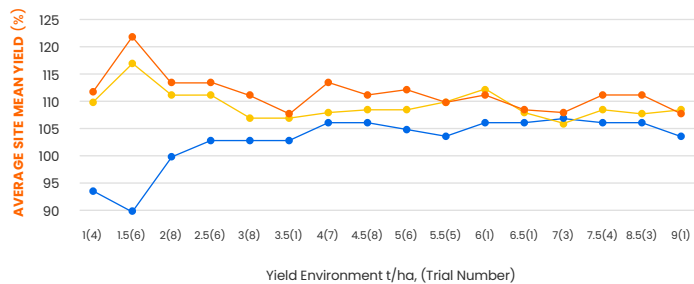
VICTORIA - YIELD PERFORMANCE

MAIN SEASON



2015-19 VIC predicted NVT main season MET yield performance, represented annually as a % of average site mean yield

(Data accessed from the NVT Online website on 06/02/2020)



2015-19 VIC predicted NVT main season MET yield performance, represented by yield environment as a % of site mean yield

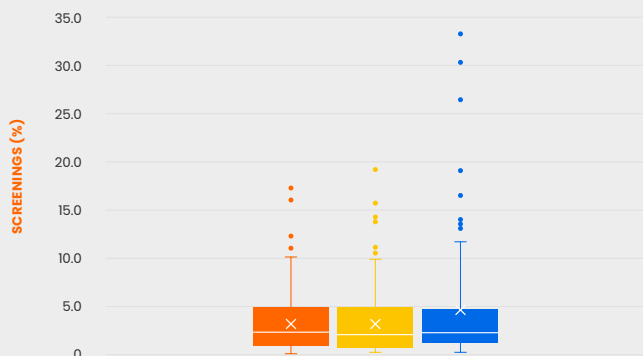
(Brackets indicate number of trials)

(Data accessed from the NVT Online website on 06/02/2020)



GRAIN QUALITY

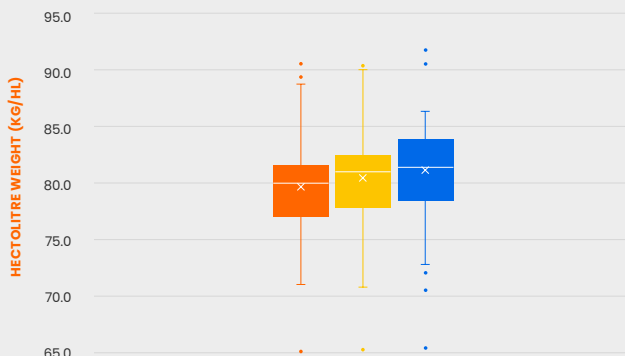
SCREENINGS



2018-19 NVT Screenings (%)

(Data accessed from the GRDC NVT website on 12/03/2020)

HECTOLITRE WEIGHT



2018-19 NVT Hectolitre Weight (kg/hl)

(Data accessed from the GRDC NVT website on 12/03/2020)



SEED AVAILABILITY

Seed is available through farmer to farmer, your local reseller or Seedclub member.

For more information please contact:

VIC: Katherine Munn ☎️ 0436 801 161 @ kmunn@intergrain.com

VIC: Ash Brooks ☎️ 0476 020 451 @ abrooks@intergrain.com

SA: Josh Reichstein ☎️ 0422 235 537 @ jreichstein@intergrain.com

PBR/EPR

ROCKSTAR[®] is protected by Plant Breeder's Rights and is subject to an end point royalty of \$3.50/tonne GST Exclusive. ROCKSTAR[®] is an InterGrain variety bred by Dan Mullan and the InterGrain wheat breeding team.

Disclaimer

All material contained or referred to in this publication is copyright. InterGrain is the owner of the copyright, unless otherwise indicated. Neither this publication nor any part of it may be reproduced in any way without the written consent of InterGrain. The information provided in this publication is considered true and correct at the time of printing although may be subject to change. This publication is intended as a general guide only for the purposes of providing a general understanding of InterGrain and its products. This publication should not be taken as detailed information regarding InterGrain or its products. InterGrain has taken all due care to ensure that the information provided is accurate at the time of publication; however, InterGrain does not guarantee or warrant the accuracy, completeness or currency of the information provided. Australian grain growers should regularly seek updated information and should rely on their own investigation and inquiries regarding the suitability of any product. Neither InterGrain, nor its affiliates, agents or employees, shall be held liable for any loss or damage whatsoever arising out of or in relation to the contents of the publication, whether such loss or damage arises from the negligence or misrepresentation or any act or omission of InterGrain or its agents or employees. InterGrain does not accept liability for loss or damaged, suffered or incurred as a result of acting on or refraining to act as a result of any material contained in this publication