

ROCKSTAR[Ⓛ]_{PBR}

AUSTRALIAN HARD

AH

NEW

ALTERNATIVE TO:

LRPB RELIANT[Ⓛ] LRPB FLANKER[Ⓛ]
LRPB LANCER[Ⓛ] SUNCHASER[Ⓛ]
EGA GREGORY[Ⓛ]



NORTHERN ZONE 2020
(QLD/NORTHERN NSW)



Variety Overview

ROCKSTAR[Ⓛ] is an exceptionally high-yielding, mid-slow maturing variety, with a slightly quicker maturity than LRPB LANCER[Ⓛ]. It has an AH classification in the Northern Zone. It delivers exceptional yields and national data suggests a large yield improvement within the mid-slow spring maturity class. ROCKSTAR[Ⓛ] offers an opportunity to maximise earlier sowing opportunities and spread flowering windows during critical spring stress periods.

ROCKSTAR[Ⓛ] has good stem rust (MR), yellow leaf spot (MRMS) and stripe rust (MRMS) resistance. Very good P. thornei and P. neglectus resistance will also be an advantage in northern production systems experiencing nematode issues. It has a good grain size, good test weight and has a moderate plant height, similar to LRPB LANCER[Ⓛ].

ROCKSTAR[Ⓛ] is an excellent varietal alternative offering a unique maturity group in the Northern Zone, with recommended sowing time between SUNTOP[Ⓛ] and LRPB LANCER[Ⓛ], and a predicted yield advantage when comparing both maturity classes.

ROCKSTAR[Ⓛ] is available for planting in 2021 from local resellers and Seedclub members.

The AH wheat that rocks till late

Variety at a glance



HIGH YIELD AND YIELD STABILITY



P. THORNEI RESISTANCE (MRMS)



GOOD STRIPE RUST RESISTANCE (MRMS)



MATURITY: MID-SLOW SPRING



GOOD GRAIN SIZE

For more information please contact:

Katherine Munn ☎ 0436 801161 @ kmunn@intergrain.com

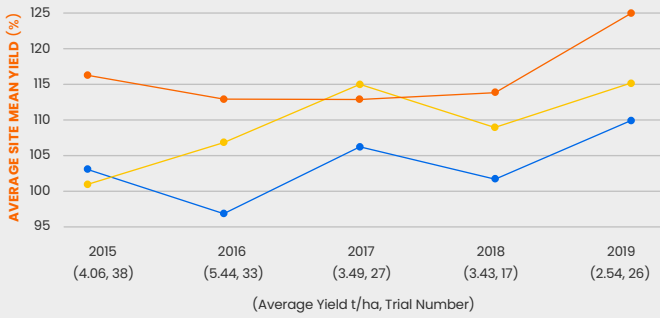
PLANT FEATURES & DISEASE

| Variety | Variety Features | | | Disease | | | | | | | | | | | | |
|---------------------------|-------------------------------------|----------|--------------|-------------|-----------|-----------|------------------|----------------|------------------|-----------|-------------|-----|----------------------|-----------------------|--------------------------------|-------------------------|
| | Classification - South-Eastern Zone | Maturity | Plant Height | Stripe Rust | Stem Rust | Leaf Rust | Yellow Leaf Spot | Powdery Mildew | Septoria Tritici | Crown Rot | Black Point | CCN | P. Thornei Tolerance | P. Thornei Resistance | P. Neglectus Tolerance (North) | P. Neglectus Resistance |
| ROCKSTAR [Ⓛ] | AH | Mid-Slow | Medium | MRMS | MR | S | MRMS | S | MSS | S(p) | MS | MSS | MI | MRMS | - | MRMS |
| LRPB RELIANT [Ⓛ] | AH | Mid | | MR | R | RMR | S | MR | S | MS | MS | MSS | TMT | MSS | MTMI | SVS |
| LRPB FLANKER [Ⓛ] | AH | Mid-Late | | RMR | MR | RMR | MSS | MSS | MSS | MSS | MS | S | MT | MSS | MT | S |
| LRPB LANCER [Ⓛ] | APH | Mid-Slow | Short | MR | R | MR/MS | MRMS | MRMS | MS | MSS | MRMS | S | TMT | MS | MTMI | S |
| SUNCHASER [Ⓛ] | AH | Mid | | MR | MR | R | MS | SVS | MSS | MSS(p) | MS | MSS | TMT | MSS | - | S |

Source: 2019 NVT Pathology consensus disease ratings. **Resistance Ratings:** R = Resistant, RMR = Resistant to Moderately Resistant, MR = Moderately Resistant, MRMS = Moderately Resistant to Moderately Susceptible, MS = Moderately Susceptible, MSS = Moderately Susceptible to Susceptible, S = Susceptible, SVS = Susceptible to Very Susceptible, VS = Very Susceptible. **Tolerance ratings:** T = Tolerant, TMT = Tolerant to Moderately Tolerant, MT = Moderately Tolerant, MTMI = Moderately Tolerant to Moderately Intolerant, MI = Moderately Intolerant, MII = Moderately Intolerant to Intolerant, I = Intolerant, VI = Very Intolerant. * Pathotype dependent. () = Higher disease at some sites, p = provisional rating. **2018 NVT Pathology consensus disease ratings. **Variety Features Source:** InterGrain wheat breeding. **Powdery Mildew:** Ratings are based on SA NVT data.

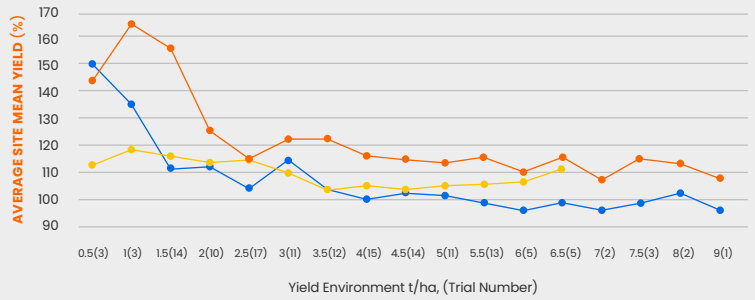
SOUTHERN NEW SOUTH WALES- YIELD PERFORMANCE

EARLY SEASON



2015-19 QLD & NSW predicted early season NVT MET yield performance, represented annually as a % of average site mean yield

(Data accessed from the NVT Online website on 18/06/20)



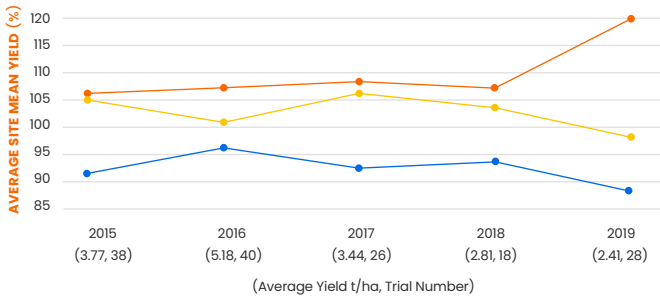
2015-19 QLD & NSW predicted early season NVT MET yield performance, represented by yield environment as a % of site mean yield

(Brackets indicate number of trials)

(Data accessed from the NVT Online website on 18/06/20)

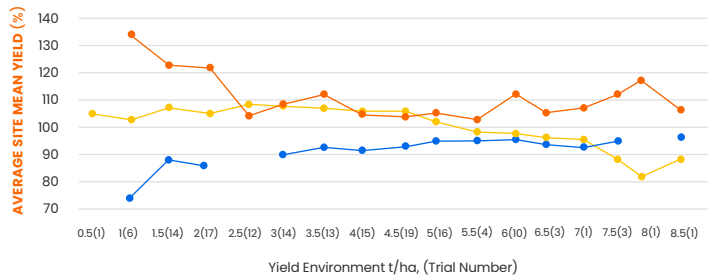


MAIN SEASON



2015-19 QLD & NSW predicted main season NVT MET yield performance, represented annually as a % of average site mean yield

(Data accessed from the NVT Online website on 18/06/20)



2015-19 QLD & NSW predicted main season NVT MET yield performance, represented by yield environment as a % of site mean yield

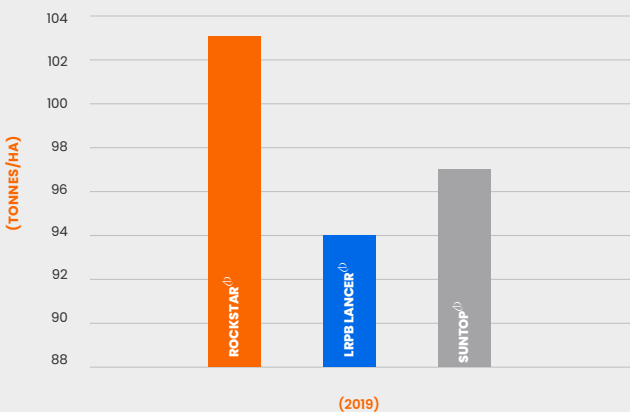
(Brackets indicate number of trials)

(Data accessed from the NVT Online website on 18/06/20)



CASE STUDY

2019 INTERGRAIN TRIAL SITE: BROOKSTEAD

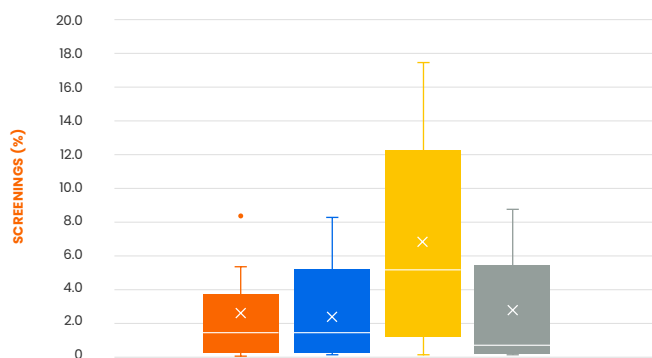


Trial Site Mean = 3.90 tonnes/ha and $h^2 = 0.52$, $CV = 4.38\%$

The 2019 Brookstead site was dry sown on the 25th of May and irrigated to provide a uniform germination. Prior to sowing the grey-black clay loams soils were very dry and cloddy following several months of dry weather, making irrigation necessary. The paddock had good stubble cover from a barley crop in 2018, and some residual nitrogen from a chickpea crop in 2017. Predicta-B results collected from the site prior to sowing showed low levels of P. thornei in the soil. Brookstead received 170mm of annual rainfall, with 50mm of this growing season rainfall. Partial irrigation by lateral overhead was required to ensure the crop was able to finish.

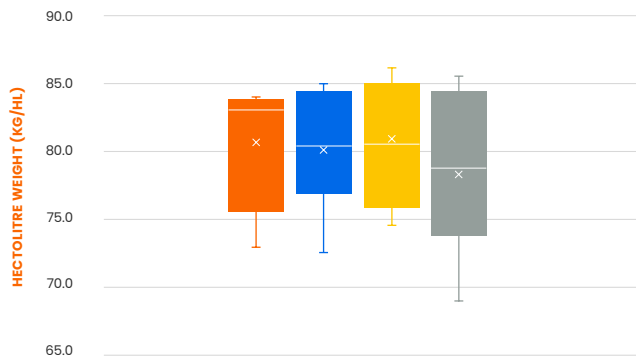
GRAIN QUALITY

SCREENINGS



2019 Southern NSW NVT Screenings (%)
(Data accessed from the NVT Online website on 12/03/2020)

HECTOLITRE WEIGHT



2019 Southern NSW NVT Hectolitre Weight (kg/hl)
(Data accessed from the NVT Online website on 12/03/2020)



SEED AVAILABILITY

Seed is available through farmer to farmer trade, your local reseller or Seedclub member.

For more information please contact:

Katherine Munn 📞 0436 801 161 📧 kmunn@intergrain.com

PBR/EPR

ROCKSTAR[®] is protected by Plant Breeder's Rights and is subject to an end point royalty of \$3.50/tonne GST Exclusive. ROCKSTAR[®] is an InterGrain variety bred by Dan Mullan and the InterGrain wheat breeding team.

Disclaimer

All material contained or referred to in this publication is copyright. InterGrain is the owner of the copyright, unless otherwise indicated. Neither this publication nor any part of it may be reproduced in any way without the written consent of InterGrain. The information provided in this publication is considered true and correct at the time of printing although may be subject to change. This publication is intended as a general guide only for the purposes of providing a general understanding of InterGrain and its products. This publication should not be taken as detailed information regarding InterGrain or its products. InterGrain has taken all due care to ensure that the information provided is accurate at the time of publication; however, InterGrain does not guarantee or warrant the accuracy, completeness or currency of the information provided. Australian grain growers should regularly seek updated information and should rely on their own investigation and inquiries regarding the suitability of any product. Neither InterGrain, nor its affiliates, agents or employees, shall be held liable for any loss or damage whatsoever arising out of or in relation to the contents of the publication, whether such loss or damage arises from the negligence or misrepresentation or any act or omission of InterGrain or its agents or employees. InterGrain does not accept liability for loss or damaged, suffered or incurred as a result of acting on or refraining to act as a result of any material contained in this publication.