

ROSALIND

FEED BARLEY


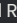

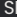
ALTERNATIVE TO:




COMPASS 
SPARTACUS CL 
OXFORD 
LA TROBE 
RGT PLANET 
WESTMINSTER 
SCOPE CL 





FARMER TO FARMER
TRADE APPROVED

Variety Overview

ROSALIND  is an exceptionally high yielding feed barley. In general ROSALIND  is earlier to flowering than SCOPE CL  for all sowing dates and similar or slightly later than SPARTACUS CL .

ROSALIND  is a broadly adapted variety. It performs exceptionally well across all rainfall zones and is ideally suited to May sowings. ROSALIND  is an excellent option where there is a low probability of delivering malt grade barley and yield and yield stability is the top priority. ROSALIND  has a robust disease resistance profile. It is resistant to CCN, offers good leaf rust resistance, powdery mildew and net form of net blotch resistance.

ROSALIND  has strong lodging tolerance and a low head loss risk. It also has good physical grain characteristics, including good grain size.

ROSALIND  is available through your local reseller, InterGrain Seedclub member or farmer to farmer trade.



EASTERN REGION 2019



The smart feed barley with yield and yield stability is in its DNA.

VARIETY AT A GLANCE



EXCEPTIONAL YIELD
& YIELD STABILITY



GOOD NET FORM
NET BLOTCH



GOOD LEAF RUST
RESISTANCE



CCN RESISTANT



HEAD LOSS RISK:
LOW



TIME TO
FLOWERING:
EARLY-MID







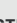
For more information please contact:

SA: Josh Reichstein ☎ 0422 235 537 @ jreichstein@intergrain.com

VIC: Ash Brooks ☎ 0476 020 451 @ abrooks@intergrain.com

NSW/QLD: Katherine Munn ☎ 0436 801 161 @ kmunn@intergrain.com

PLANT FEATURES

Variety	Classification	Time to Flowering	Coleoptile Length	Lodging Tolerance	Height	Head Loss Risk	Grain Plumpness	Rachilla hair length
ROSALIND 	Feed	Early-Mid	Short	Strong	Mod. Short	Low	6-7	Long
LA TROBE 	Malt	Early	Short	Medium	Short - Mod. Short	Medium	7	Short
RGT PLANET 	Malt	Mid	-	Medium	Moderate	Low	6	Short
SPARTACUS CL 	Malt	Early	Short	Strong	Mod. Short	Low	8	Short
SCOPE CL 	Malt	Mid	Short	Poor	Mod. Tall	High	6	Long
OXFORD 	Feed	Late	Medium	Very Strong	Short - Mod. Short	Low	6	Long
WESTMINSTER 	Malt	Late	-	Strong	Moderate	Low	-	-

Source: 2019 Victorian Winter Crop Summary and InterGrain Barley Breeding. Coleoptile Lengths, Lodging tolerance, Head loss Risk & Rachilla lengths – 2019 Barley Variety Sowing Guide for Western Australia.

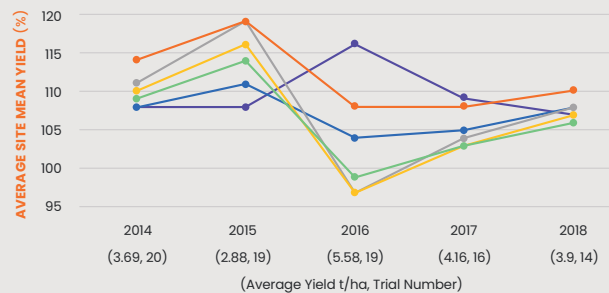
DISEASE

Variety	Leaf Rust SA	Leaf Rust VIC	Leaf Rust NSW	Leaf Rust QLD	Powd. Mildew QLD	Powd. Mildew SA	Powd. Mildew VIC	SFNB VIC	SFNB SA	SFNB NSW	SFNB QLD	NFNB SA	NFNB VIC	NFNB QLD	NFNB NSW	CCN	BYDV	SCALD SA	SCALD VIC	SCALD NSW
ROSALIND (p)	MR-MS	MR	MRMS	MR	MRMS/SVS	MR-S	S	S	MS-S	SVS	MSS	MR	MR	MRMS	MR	R	MR/MS	MR-S	MS	S
COMPASS (p)	SVS	VS	VS	VS	MRMS/S	MRMS-S	MS	MSS	MR-MSS	MSS	MRMS	MR-MSS	MRMS	MRMS/MSS	MRMS	R	MSS	MS-SVS	SVS	SVS
LA TROBE (p)	MRMS-S	S	S	MSS	MRMS/SVS	MR-SVS	MS#	S	MSS	S	SVS	MR-MSS	MR#	MS	MS	R	S	R-VS	SVS	MRMS-VS
OXFORD (p)	R-MS	MS	MS	MRMS	R	R	R	S	MS-S	S	S	MR-VS	S	S/MRMS	MSS	S	MR-MRMS	MS-SVS	S	SVS
RGT PLANET (p)	MR-MS	MRMS	MRMS	MRMS	R	R	R	S	S	SVS	S	MRMS-SVS	SVS	S/MRMS	S	Rp	MR/MSS	R-SVS	S	S
WESTMINSTER (p)	R-MRMS	MRMS	MRMS	MRMS	R	R	R	S	S	S	S	R-S	MR#	S/MRMS	MSS	-	MR-MRMS	R-S	MRMS	MS
SPARTACUS CL (p)	MR-S	S	S	MSS	MRMS/SVS	MR-SVS	S	SVS	S	SVS	SVS	MRMS-S	MS	MS	MR-S	R	MSS	R-VS	SVS	VS

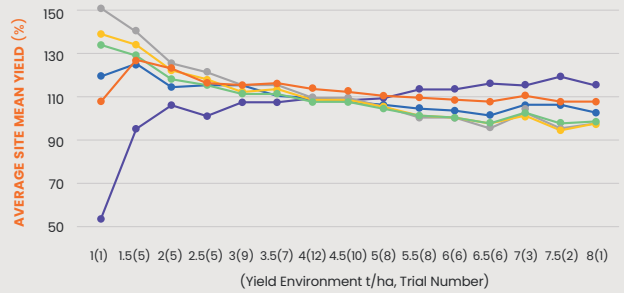
Source: 2019 NVT Pathology Disease consensus ratings, # Varieties marked may be more susceptible if alternative strains are present, Disease data reference: R = Resistant, RMR = Resistant to Moderately Resistant, MR = Moderately Resistant, MRMS = Moderately Resistant to Moderately Susceptible, MS = Moderately Susceptible, MSS = Moderately Susceptible to Susceptible, S = Susceptible, SVS = Susceptible to Very Susceptible, VS = Very Susceptible, p= provisional rating.

YIELD PERFORMANCE

SOUTH AUSTRALIA



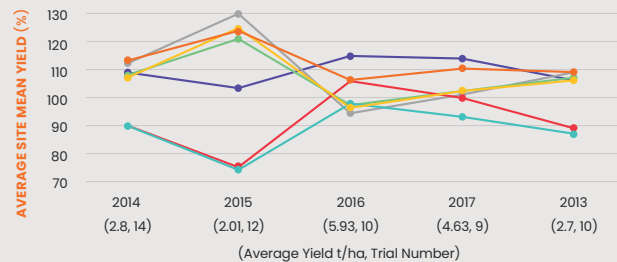
2014-18 SA NVT MET yield performance, represented annually as a % of average site mean yield
(Data accessed from the NVT Online website on 22/03/2019.)



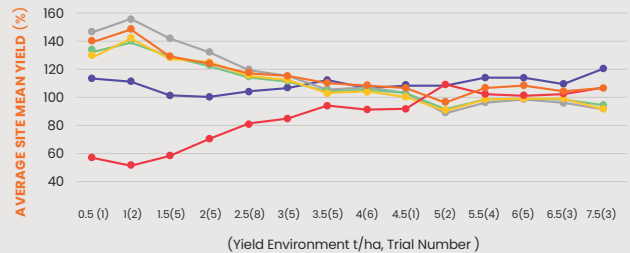
2014-18 SA NVT MET yield performance, represented by yield environment as a % of site mean yield.
(Data accessed from the NVT Online website on 22/03/2019.)



VICTORIA



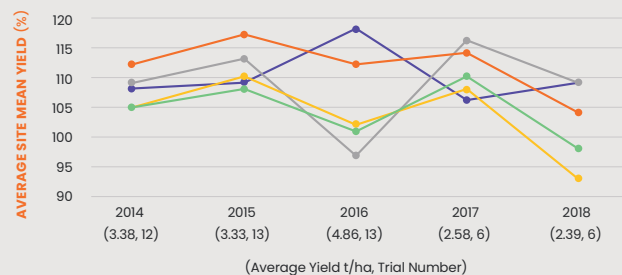
2014-18 VIC NVT MET yield performance, represented annually as a % of average site mean yield
(Data accessed from the NVT Online website on 22/03/2019.)



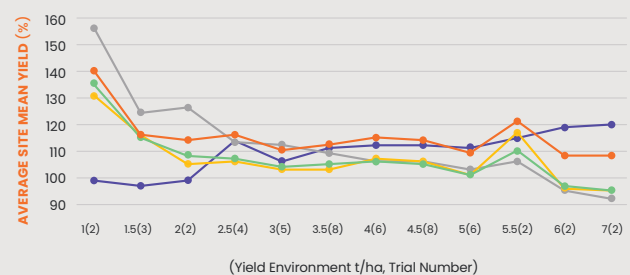
2014-18 VIC NVT MET yield performance, represented by yield environment as a % of site mean yield
(Data accessed from the NVT Online website on 22/03/2019.)



NEW SOUTH WALES



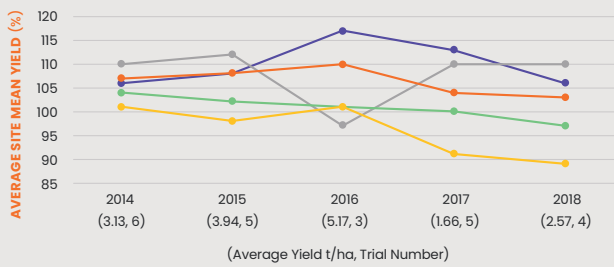
2014-18 NSW NVT MET yield performance, represented annually as a % of average site mean yield
(Data accessed from the NVT Online website on 22/03/2019.)



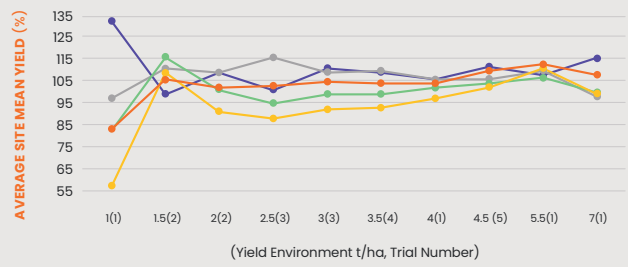
2014-18 NSW NVT MET yield performance, represented by yield environment as a % of site mean yield
(Data accessed from the NVT Online website on 22/03/2019.)



QUEENSLAND



2014-18 QLD NVT MET yield performance, represented annually as a % of average site mean yield
(Data accessed from the NVT Online website on 22/03/2019.)

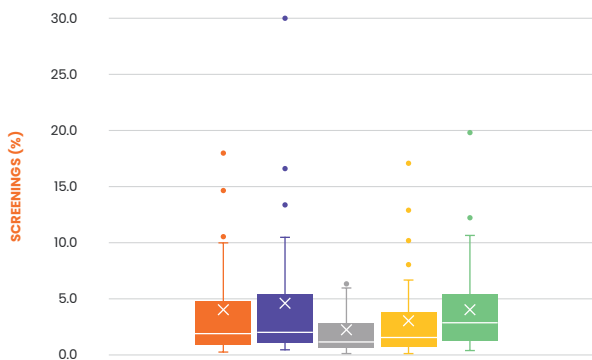


2014-18 QLD NVT MET yield performance, represented by yield environment as a % of site mean yield
(Data accessed from the NVT Online website on 22/03/2019.)



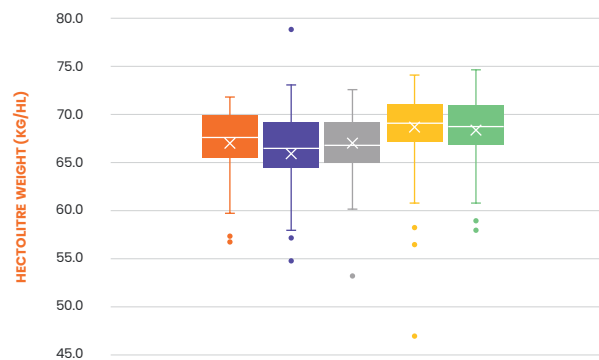
GRAIN QUALITY

SCREENINGS



2016-18 NVT Screenings (<2.2mm) (%)
(Data accessed from the NVT Online website on 22/03/2019.)

HECTOLITRE WEIGHT



2016-18 NVT Hectolitre Weight (Kg/hl)
(Data accessed from the NVT Online website on 22/03/2019.)



SEED AVAILABILITY

Seed is available from through your local reseller, Seedclub member or farmer to farmer trade.

For more information please contact:

SA: Josh Reichstein

📞 **0422 235 537** @ **jreichstein@intergrain.com**

VIC: Ash Brooks

📞 **0476 020 451** @ **abrooks@intergrain.com**

NSW/QLD: Katherine Munn

📞 **0436 801 161** @ **kmunn@intergrain.com**

PBR/EPR

ROSALIND ϕ is protected by Plant Breeder's Rights and is subject to an End Point Royalty of \$3.50/tonne GST Exclusive. ROSALIND ϕ is an InterGrain variety bred by the InterGrain barley breeding team.

Disclaimer

All material contained or referred to in this publication is copyright. InterGrain is the owner of the copyright, unless otherwise indicated. Neither this publication nor any part of it may be reproduced in any way without the written consent of InterGrain. The information provided in this publication is considered true and correct at the time of printing although may be subject to change. This publication is intended as a general guide only for the purposes of providing a general understanding of InterGrain and its products. This publication should not be taken as detailed information regarding InterGrain or its products. InterGrain has taken all due care to ensure that the information provided is accurate at the time of publication; however, InterGrain does not guarantee or warrant the accuracy, completeness or currency of the information provided. Australian grain growers should regularly seek updated information and should rely on their own investigation and inquiries regarding the suitability of any product. Neither InterGrain, nor its affiliates, agents or employees, shall be held liable for any loss or damage whatsoever arising out of or in relation to the contents of the publication, whether such loss or damage arises from the negligence or misrepresentation or any act or omission of InterGrain or its agents or employees. InterGrain does not accept liability for loss or damaged, suffered or incurred as a result of acting on or refraining to act as a result of any material contained in this publication