

ROSALIND [Ⓟ] PBR

FEED BARLEY

ALTERNATIVE TO:

COMPASS [Ⓟ]
SPARTACUS CL [Ⓟ]
OXFORD [Ⓟ]
LA TROBE [Ⓟ]
RGT PLANET [Ⓟ]
WESTMINSTER [Ⓟ]
SCOPE CL [Ⓟ]



FARMER TO FARMER
TRADE APPROVED

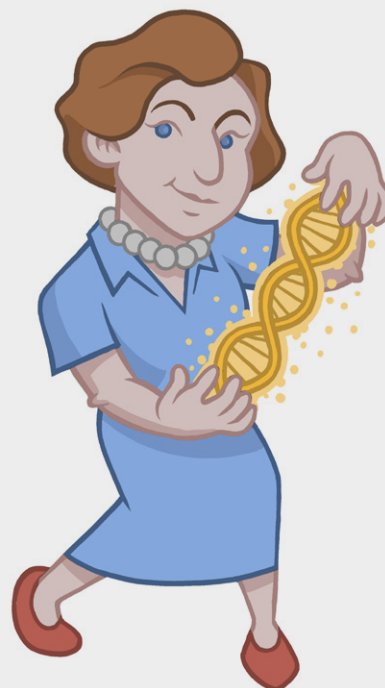
Variety Overview

ROSALIND[Ⓟ] is an exceptionally high yielding feed barley. In general, ROSALIND[Ⓟ] is earlier to flowering than SCOPE CL[Ⓟ] for all sowing dates and similar or slightly later than SPARTACUS CL[Ⓟ].*

ROSALIND[Ⓟ] is a broadly adapted variety. It performs very well across all rainfall zones and is ideally suited to May sowings. ROSALIND[Ⓟ] is an excellent option where there is a low probability of delivering malt grade barley and yield and yield stability is the top priority. ROSALIND[Ⓟ] has a robust disease resistance profile. It is resistant to CCN, offers good leaf rust resistance, powdery mildew (pathotype dependent) and net form of net blotch resistance.

ROSALIND[Ⓟ] has strong lodging tolerance and a low head loss risk. It also has good physical grain characteristics, including good grain size.

ROSALIND[Ⓟ] is available through your local reseller, InterGrain Seedclub member or farmer to farmer trade.



EASTERN AUSTRALIA 2020



The smart feed barley with yield and yield stability is in its DNA.

VARIETY AT A GLANCE



EXCEPTIONAL YIELD & YIELD STABILITY



GOOD NET FORM & NET BLOTCH



GOOD LEAF RUST RESISTANCE



CCN RESISTANT



HEAD LOSS RISK: LOW



MATURITY: QUICK-MID SPRING

For more information please contact:

SA: Josh Reichstein ☎ 0422 235 537 @ jreichstein@intergrain.com

VIC: Ash Brooks ☎ 0476 020 451 @ abrooks@intergrain.com

NSW/QLD: Katherine Munn ☎ 0436 801 161 @ kmunn@intergrain.com

PLANT FEATURES

Variety	Classification	Maturity	Coleoptile Length	Lodging Tolerance	Height	Head Loss Risk	Grain Plumpness	Rachilla hair length
ROSALIND [Ⓟ]	Feed	Quick-Mid	Short	Strong	Mod. Short	Low	Mod. Good	Long
MAXIMUS CL [Ⓟ]	Potential Malt	Quick-Mid	Short	Strong	Medium	Low-Medium	Good	Long
LA TROBE [Ⓟ]	Malt	Quick	Short	Medium	Short - Mod. Short	Medium	Mod. Good	Short
RGT PLANET [Ⓟ]	Malt	Mid	Medium	Medium	Medium	Low	Fair	Short
SPARTACUS CL [Ⓟ]	Malt	Quick	Short	Strong	Mod. Short	Low	Mod. Good	Short
SCOPE CL [Ⓟ]	Malt	Mid	Short	Poor	Mod. Tall	High	Fair	Long
OXFORD [Ⓟ]	Feed	Slow	Medium	Very Strong	Short - Mod. Short	Low	Fair	Long
WESTMINSTER [Ⓟ]	Malt	Slow	-	Strong	Medium	Low	-	-

Source: 2020 Victorian Winter Crop Summary and InterGrain Barley Breeding. Coleoptile Lengths, Lodging Tolerance & Head Loss Risk – 2020 Barley Variety Sowing Guide for Western Australia. * Flower Power - Department of Primary Industries and Regional Development Western Australia.

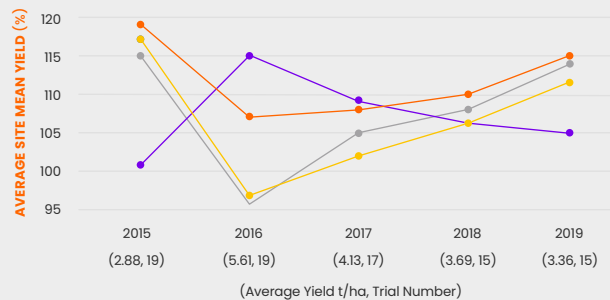
DISEASE

Variety	Leaf Rust SA	Leaf Rust VIC	Leaf Rust NSW*	Leaf Rust QLD	Powd. Mildew QLD	Powd. Mildew SA	Powd. Mildew VIC	SFNB VIC	SFNB SA	SFNB NSW	SFNB QLD	NFNB SA	NFNB VIC	NFNB QLD	NFNB NSW	CCN	BYDV	SCALD SA	SCALD VIC	SCALD NSW	Barley covered smut
ROSALIND [Ⓛ]	MR-MS	MR	MRMS*	MR	MRMS/SVS	MRMS-S	SVS	S	MS-S	SVS	MS	MR	MR	MRMS	MR	R	MR-MRMS	MR-S	S	S	MRMS
MAXIMUS CL [Ⓛ]	MS-S	S	SVSp*	MSS	S	MR-S	S	MS	MRMS-MS	MS	MRMS	RMR-MRMS	MRMS	MRMS	MRMS	R	MRMS	R-MRMS	MRMS	S	MS
COMPASS [Ⓛ]	SVS	SVS	VS*	VS	MRMS/S	MRMS-S	MRMS	MS	MRMS-MSS	MSS	MRMS	MR-MSS	MSS	MRMS/MSS	MRMS	R	MRMS-MS	MR-SVS	SVS	SVS	R
LA TROBE [Ⓛ]	MRMS-S	S	S*	MSS	MRMS/SVS	MR-SVS	MS#	S	MSS	S	SVS	MR-MSS	MR	MS	MS	R	MSS	R-SVS	SVS	MRMS-VS	MS
OXFORD [Ⓛ]	R-MS	MS	MS*	MRMS	R	R	R	S	MS-S	S	S	MR-VS	VS	S/MS	MSS	S	MR-MRMS	MS-SVS	SVS	SVS	MRMS
RGT PLANET [Ⓛ]	MR-MS	MS	MRMS*	MRMS	R	R	R	S	S-SVS	SVS	S	MR-SVS	SVS	S/ MRMS	S	Rp	MR/ MSS	R-SVS	SVS	S	R
WESTMINSTER [Ⓛ]	R-MRMS	MRMS	MRMS*	MRMS	R	R	R	S	S	S	S	R-S	MR#	S/ MRMS	MSS	-	MRMS	R-S	MRMS	MS	MR
SPARTACUS CL [Ⓛ]	MR-S	S	S*	MSS	MRMS/SVS	MR-SVS	SVS	SVS	S	SVS	SVS	MSS-SVS	MSS	MS	MR-S	R	MS-S	R-VS	SVS	VS	MS
SCOPE CL [Ⓛ]	MS-SVS	S	S*	S	RMR	RMR	RMR	MSS	MS-S	MSS	MSS	MR	MR#	MSS	MRMS	S	MRMS	MRMS-SVS	S	SVS	MS

Source: 2019 NVT Pathology Disease consensus ratings, # Varieties marked may be more susceptible if alternative strains are present, Disease data reference: R = Resistant, RMR = Resistant to Moderately Resistant, MR = Moderately Resistant, MRMS = Moderately Resistant to Moderately Susceptible, MS = Moderately Susceptible, MSS = Moderately Susceptible to Susceptible, S = Susceptible, SVS = Susceptible to Very Susceptible, VS = Very Susceptible, p= provisional rating. *2018 NVT Pathology Disease consensus ratings.

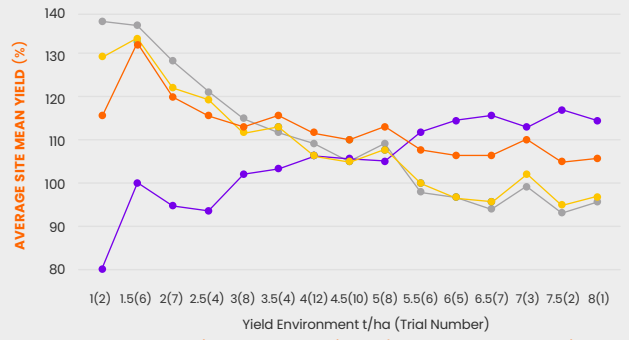
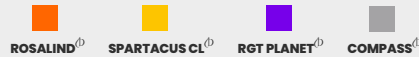
YIELD PERFORMANCE

SOUTH AUSTRALIA



2015-19 SA main season NVT MET yield performance, represented annually as a % of average site mean yield

(Data accessed from the NVT Online website on 10/02/2020)

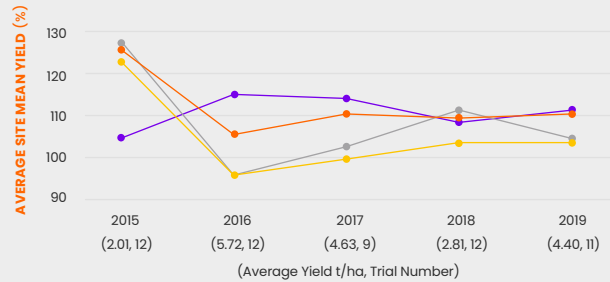


2015-19 SA main season NVT MET yield performance, represented by yield environment as a % of site mean yield

(Brackets indicate number of trials)

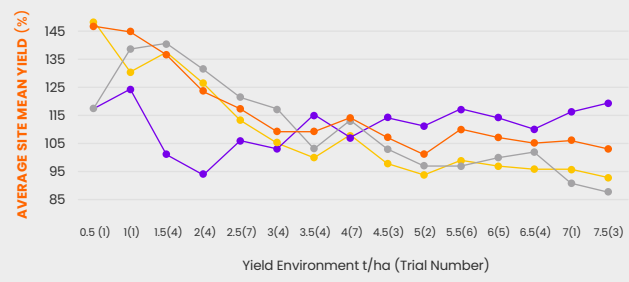
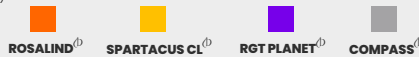
(Data accessed from the NVT Online website on 10/02/2020)

VICTORIA



2015-19 VIC main season NVT MET yield performance, represented annually as a % of average site mean yield

(Data accessed from the NVT Online website on 10/02/2020)

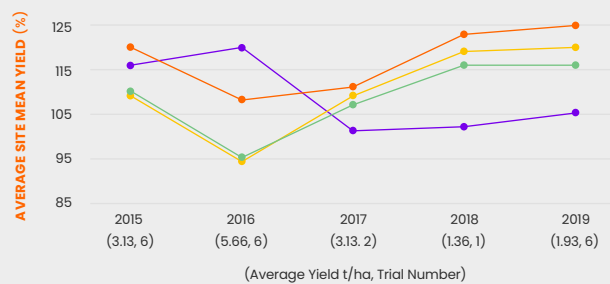


2015-19 VIC main season NVT MET yield performance, represented by yield environment as a % of site mean yield

(Brackets indicate number of trials)

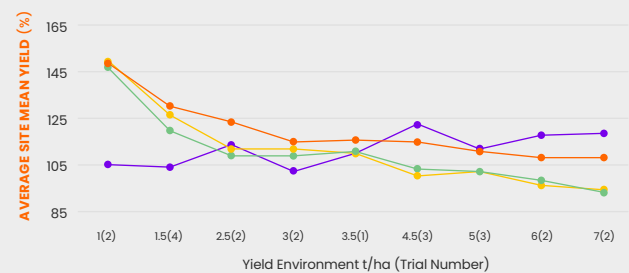
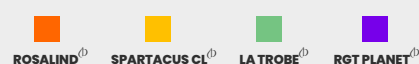
(Data accessed from the NVT Online website on 10/02/2020)

SOUTHERN NEW SOUTH WALES



2015-19 Southern NSW main season NVT MET yield performance, represented annually as a % of average site mean yield

(Data accessed from the NVT Online website on 21/05/2020)

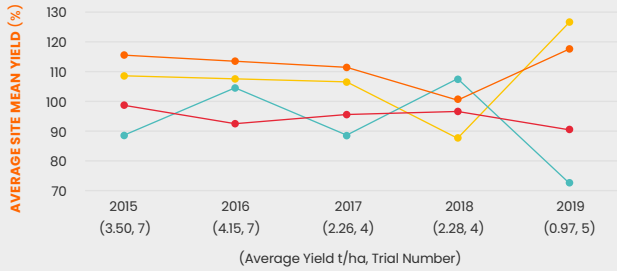


2015-19 Southern NSW main season NVT MET yield performance, represented by yield environment as a % of site mean yield

(Brackets indicate number of trials)

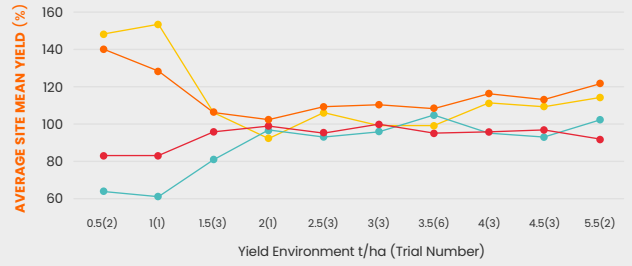
(Data accessed from the NVT Online website on 21/05/2020)

NORTHERN NEW SOUTH WALES



2015-19 Northern NSW main season NVT MET yield performance, represented annually as a % of average site mean yield

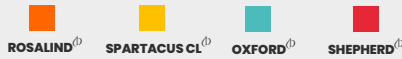
(Data accessed from the NVT Online website on 21/05/2020)



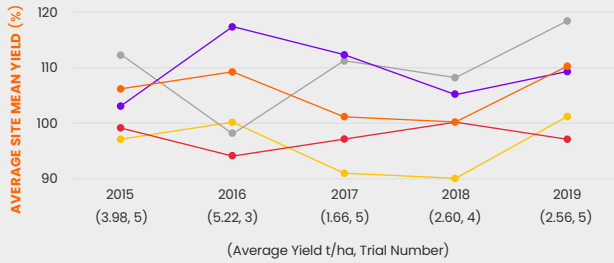
2015-19 Northern NSW main season NVT MET yield performance, represented by yield environment as a % of site mean yield

(Brackets indicate number of trials)

(Data accessed from the NVT Online website on 21/05/2020)

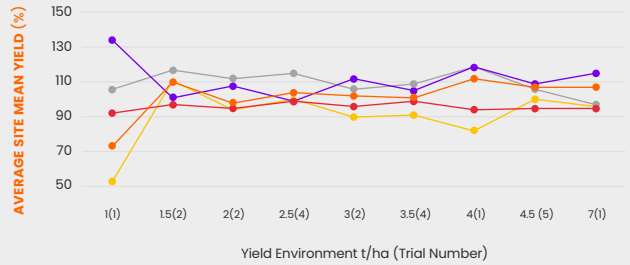


QUEENSLAND



2015-19 QLD main season NVT MET yield performance, represented annually as a % of average site mean yield

(Data accessed from the NVT Online website on 10/02/2020)



2015-19 QLD main season NVT MET yield performance, represented by yield environment as a % of site mean yield

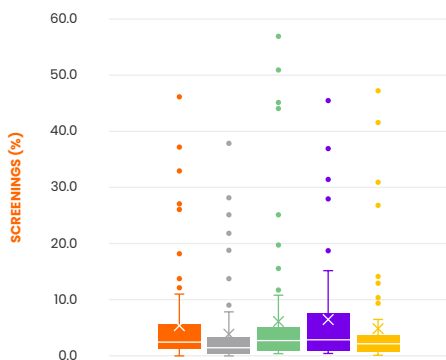
(Brackets indicate number of trials)

(Data accessed from the NVT Online website on 10/02/2020)



GRAIN QUALITY

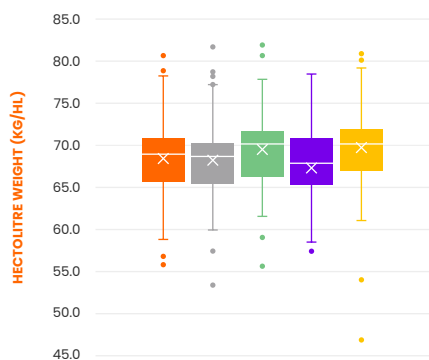
SCREENINGS



2018-19 NVT Screenings (<2.0mm) (%)

(Data accessed from the NVT Online website on 12/03/2020)

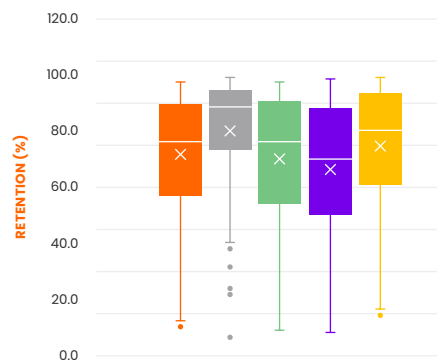
HECTOLITRE WEIGHT



2018-19 NVT Hectolitre Weight (kg/hl)

(Data accessed from the NVT Online website on 12/03/2020)

RETENTION



2018-19 NVT Retention (>2.5mm) (%)

(Data accessed from the NVT Online website on 12/03/2020)



SEED AVAILABILITY

Seed is available through farmer to farmer trade, your local reseller or Seedclub member.

For more information please contact:

SA: Josh Reichstein



0422 235 537



jreichstein@intergrain.com

VIC: Ash Brooks



0476 020 451



abrooks@intergrain.com

NSW/QLD: Katherine Munn



0436 801 161



kmunn@intergrain.com

PBR/EPR

ROSALIND[®] is protected by Plant Breeder's Rights and is subject to an End Point Royalty of \$3.50/tonne GST Exclusive. ROSALIND[®] is an InterGrain variety bred by the InterGrain barley breeding team.

Disclaimer

All material contained or referred to in this publication is copyright. InterGrain is the owner of the copyright, unless otherwise indicated. Neither this publication nor any part of it may be reproduced in any way without the written consent of InterGrain. The information provided in this publication is considered true and correct at the time of printing although may be subject to change. This publication is intended as a general guide only for the purposes of providing a general understanding of InterGrain and its products. This publication should not be taken as detailed information regarding InterGrain or its products. InterGrain has taken all due care to ensure that the information provided is accurate at the time of publication, however, InterGrain does not guarantee or warrant the accuracy, completeness or currency of the information provided. Australian grain growers should regularly seek updated information and should rely on their own investigation and inquiries regarding the suitability of any product. Neither InterGrain, nor its affiliates, agents or employees, shall be held liable for any loss or damage whatsoever arising out of or in relation to the contents of the publication, whether such loss or damage arises from the negligence or misrepresentation or any act or omission of InterGrain or its agents or employees. InterGrain does not accept liability for loss or damaged, suffered or incurred as a result of acting on or refraining to act as a result of any material contained in this publication.