

VIXEN[®] PBR

AUSTRALIAN HARD

AH

ALTERNATIVE TO:

MACE[®] SCEPTER[®]

CORACK[®] WYALKATCHEM[®]



FARMER TO FARMER
TRADE APPROVED



SOUTHERN ZONE 2020
(SOUTH AUSTRALIA / VICTORIA)



Variety Overview

VIXEN[®] is the highest yielding, quick-mid maturing AH wheat in the Southern Zone, based on 2015-19 SA and VIC long-term NVT data. VIXEN[®] offers a significant yield advantage compared to Corack[®] (approx. 10%*), based on long-term main season NVT results. Long-term NVT results also indicate yields are similar to Scepter[®]. It highlights VIXEN[®]'s superior capacity to perform across a range of seasons.

VIXEN[®]'s maturity is ideally suited to mid May onwards sowings. In addition to the variety's stand-out yield performance it offers good stripe (MRMS) and stem (MRMS) rust resistance and yellow leaf spot resistance (MRMS).

VIXEN[®] has strong physical grain characteristics. It has good grain size and hectolitre weight. VIXEN[®] has a short plant height, reducing stubble loads in high yielding environments.

VIXEN[®] is available from local Seedclub members and resellers and is approved for farmer to farmer trade.

A cunning variety for those looking to win the quick-mid maturing, AH wheat race.

Variety at a glance



EXCEPTIONAL YIELD



GOOD YELLOW LEAF SPOT RESISTANCE (MRMS)



GOOD STRIPE RUST RESISTANCE (MRMS)



MATURITY: QUICK-MID SPRING



GOOD GRAIN SIZE

For more information please contact :

SA: Josh Reichstein ☎ 0422 235 537 @ jreichstein@intergrain.com

VIC: Katherine Munn ☎ 0436 801 161 @ kmunn@intergrain.com

VIC: Ash Brooks ☎ 0476 020 451 @ abrooks@intergrain.com

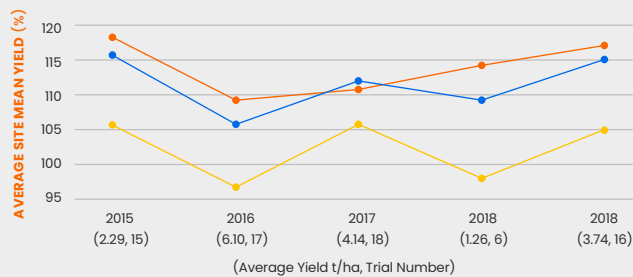
PLANT FEATURES & DISEASE

Variety	Variety Features			Disease							
	Classification	Maturity	Plant Height	Stripe Rust (Yr 17 + 27)	Stem Rust	Leaf Rust	Yellow Leaf Spot	Black Point	CCN	Septoria Tritici	Powdery Mildew
VIXEN [®]	AH	Quick-Mid	Short	MRMS	MRMS	SVS	MRMS	MSS	MSS	S	S
MACE [®]	AH	Quick-Mid	Medium	SVS	MRMS	S	MRMS	MRMS	MRMS	S	MSS
CORACK [®]	APW	Quick-Mid	Short	MS	MR	SVS	MRMS	S	RMR	S	VS
SCEPTER [®]	AH	Mid	Medium	MSS	MRMS	S	MRMS	MS	MRMS	S	SVS

Source: 2019 NVT Pathology consensus disease ratings. Reference: R = Resistant, MR = Moderately Resistant, MRMS = Moderately Resistant to Moderately Susceptible, MS = Moderately Susceptible, MSS = Moderately Susceptible to Susceptible, S = Susceptible, SVS = Susceptible to Very Susceptible, VS = Very Susceptible. # Pathotype dependent, () = Higher disease at some sites, p = provisional rating. **Variety Features:** 2020 Victorian Winter Crop Sowing Guide & InterGrain Wheat Breeding. **Powdery Mildew:** Ratings are based on 2019 SA NVT data. *Based on 2015-19 SA and VIC NVT Long-term Main Season % Yield Performance, average of 2015-19 annual yield results.

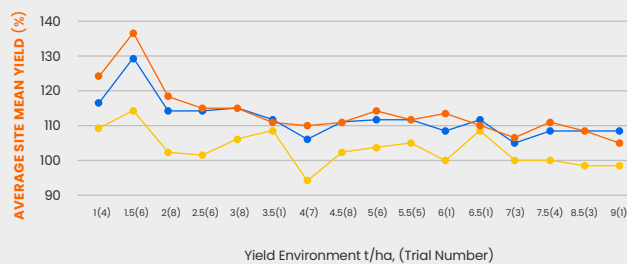
YIELD PERFORMANCE

VICTORIA



2015-19 VIC NVT main season MET Yield performance represented annually as a % of site mean yield

(Data accessed from the NVT Online website on 06/02/2020)

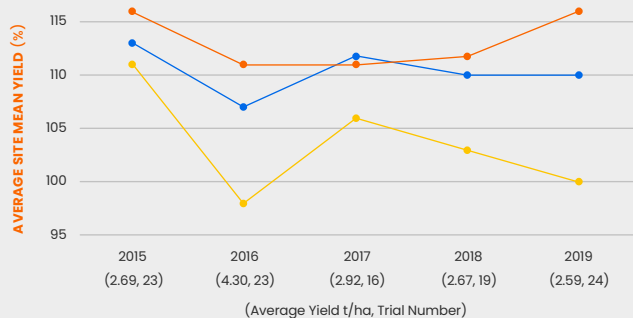


2015-19 VIC NVT main season MET yield performance, represented by yield environment as a % of site mean yield

(Brackets indicate number of trials)

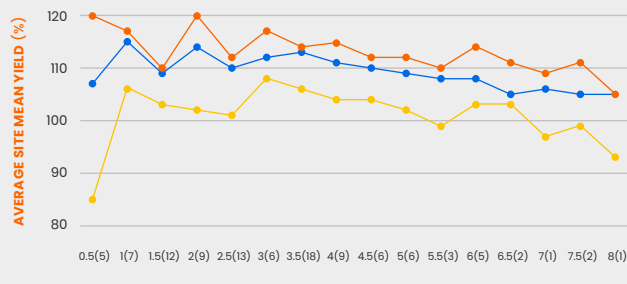
(Data accessed from the NVT Online website on 06/02/2020)

SOUTH AUSTRALIA



2015-19 SA NVT main season MET yield performance represented annually as a % of site mean yield

(Data accessed from the NVT Online website on 06/02/2020)



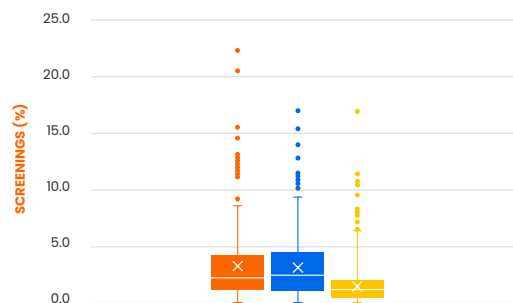
2015-19 SA NVT main season MET yield performance, represented by yield environment as a % of site mean yield

(Brackets indicate number of trials)

(Data accessed from the NVT Online website on 06/02/2020)

GRAIN QUALITY

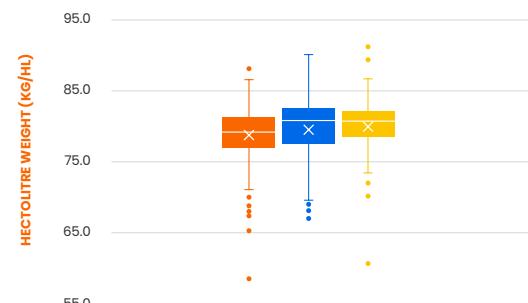
Screenings



2017-19 NVT Screenings (%)
(Data accessed from the NVT Online website on 12/03/2020)



Hectolitre Weight



2017-19 NVT Hectolitre Weight (kg/hl)
(Data accessed from the NVT Online website on 12/03/2020)

SEED AVAILABILITY

Seed is available through farmer to farmer trade, local resellers or Seedclub members.

For more information please contact:

SA: Josh Reichstein ☎ 0422 235 537 @ jreichstein@intergrain.com
VIC: Katherine Munn ☎ 0436 801 161 @ kmunn@intergrain.com
VIC: Ash Brooks ☎ 0476 020 451 @ abrooks@intergrain.com

PBR/EPR

VIXEN[®] is protected by Plant Breeder's Rights and is subject to an end point royalty of \$3.50/tonne GST Exclusive. VIXEN[®] is an InterGrain variety bred by Dan Mullan and the InterGrain wheat breeding team.

Disclaimer

All material contained or referred to in this publication is copyright. InterGrain is the owner of the copyright, unless otherwise indicated. Neither this publication nor any part of it may be reproduced in any way without the written consent of InterGrain. The information provided in this publication is considered true and correct at the time of printing although may be subject to change. This publication is intended as a general guide only for the purposes of providing a general understanding of InterGrain and its products. This publication should not be taken as detailed information regarding InterGrain or its products. InterGrain has taken all due care to ensure that the information provided is accurate at the time of publication; however, InterGrain does not guarantee or warrant the accuracy, completeness or currency of the information provided. Australian grain growers should regularly seek updated information and should rely on their own investigation and inquiries regarding the suitability of any product. Neither InterGrain, nor its affiliates, agents or employees, shall be held liable for any loss or damage whatsoever arising out of or in relation to the contents of the publication, whether such loss or damage arises from the negligence or misrepresentation or any act or omission of InterGrain or its agents or employees. InterGrain does not accept liability for loss or damaged, suffered or incurred as a result of acting on or refraining to act as a result of any material contained in this publication