

CHIEF CL PLUS [Ⓟ] PBR

AUSTRALIAN PREMIUM WHITE APW

ALTERNATIVE TO:

ELMORE CL PLUS[Ⓟ]
 GRENADE CL PLUS[Ⓟ]
 HATCHET CL PLUS[Ⓟ]
 KORD CL PLUS[Ⓟ]
 MACE[Ⓟ]
 SCEPTER[Ⓟ]



SOUTHERN ZONE 2020
(SOUTH AUSTRALIA/VICTORIA)



Variety Overview

CHIEF CL PLUS[Ⓟ] is a high yielding APW Clearfield[®] Plus wheat. CHIEF CL PLUS[Ⓟ] is a mid maturing variety and can be sown slightly earlier than MACE[Ⓟ] and later than SHERIFF CL PLUS[Ⓟ]. The variety has good yellow leaf spot resistance (MRMS) and a very large grain size and good hectolitre weight. It also has excellent pre-anthesis vigour and has a medium coleoptile.

CHIEF CL PLUS[Ⓟ] is registered for label rates of Intervix[®] herbicide, an excellent tool for post-emergent weed control. The possession of the Clearfield[®] Plus trait provides increased rotational flexibility when other IT crops have been grown the previous year and there are Imidazolinone (IMI) residue concerns.

CHIEF CL PLUS[Ⓟ] is available through your local reseller or InterGrain Seedclub member.

The weed control boss!

Variety at a glance



GOOD YELLOW
LEAF SPOT
RESISTANCE
(MRMS)



EXCELLENT
GRAIN SIZE



EXCELLENT
LEAF RUST
(MR)



CLEARFIELD
PLUS –
INTERVIX[®]
TOLERANT



MATURITY: MID
SPRING

For more information please contact:

SA: Josh Reichstein ☎ 0422 235 537 📧 jreichstein@intergrain.com
 VIC/NSW: Katherine Munn ☎ 0436 801 161 📧 kmunn@intergrain.com
 VIC: Ash Brooks ☎ 0476 020 451 📧 abrooks@intergrain.com

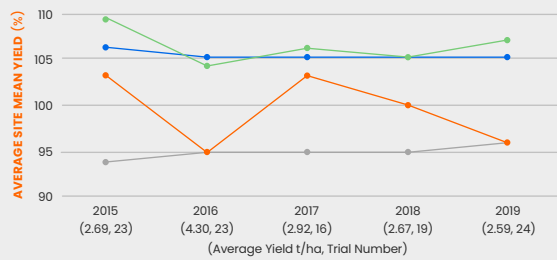
PLANT FEATURES & DISEASE

Variety	Variety Features				Disease								
	Classification	Maturity	Coleoptile	Plant Height	Stripe Rust	Stem Rust	Leaf Rust	Yellow Leaf Spot	Powdery Mildew	CCN	Septoria Tritici	Black Point	
CHIEF CL PLUS [Ⓟ]	APW	Mid	Medium	Medium	S	MR	MR	MRMS	SVS	MS	MSS	MS	
KORD CL PLUS [Ⓟ]	AH	Quick-Mid	Short	Medium	MRMS	MR	MS	MSS	MSS	MR	MSS	MRMS	
SCEPTER [Ⓟ]	AH	Mid	Medium-Short	Medium	MSS	MRMS	MSS	MRMS	SVS	MRMS	S	MS	
MACE [Ⓟ]	AH	Quick-Mid	Medium-Short	Medium	SVS	MRMS	MSS	MRMS	MSS	MRMS	S	MRMS	
ELMORE CL PLUS [Ⓟ]	AH	Mid	Medium	Medium	MRMS	MR	RMR	S	MS*	S	MSS	MS	
SHERIFF CL PLUS [Ⓟ]	APW	Mid-Slow	Medium	Medium	MSS	MS	SVS	MRMS	SVS	MS	S	MS	
RAZOR CL PLUS [Ⓟ]	ASW	Quick	-	Medium	MS	MRMS	S	MSS	MSS	MR	SVS	MS	

Source: 2019 NVT Pathology Disease consensus ratings. Disease data reference: R = Resistant, RMR = Resistant to Moderately Resistant, MR = Moderately Resistant, MRMS = Moderately Resistant to Moderately Susceptible, MS = Moderately Susceptible, MSS = Moderately Susceptible to Susceptible, S = Susceptible, SVS = Susceptible to Very Susceptible, # Pathotype dependent, () = Higher disease at some sites, p= provisional rating. **Plant Features:** 2020 Victorian Winter Crop Summary and InterGrain Wheat Breeding. KORD CL PLUS[Ⓟ] disease ratings are 2018 NVT Pathology Disease consensus ratings. *2018 NVT Pathology Disease consensus ratings. Powdery Mildew: Ratings are based on 2019 SA NVT data.

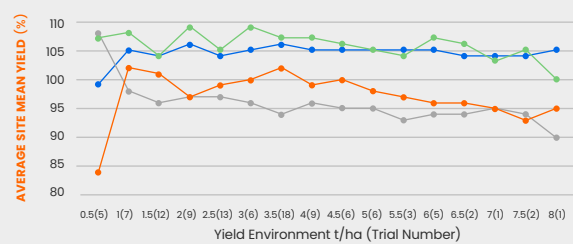
YIELD PERFORMANCE

SOUTH AUSTRALIA



2015-19 SA main season NVT MET yield performance, represented annually as a % of average site mean yield

(Data accessed from the NVT Online website on 06/02/2020)

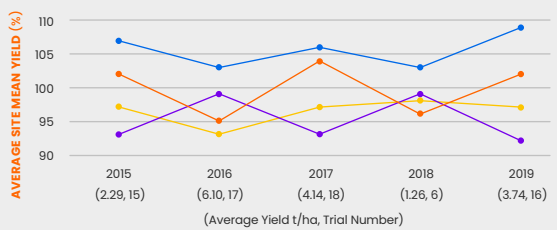


2015-19 SA main season NVT MET yield performance, represented by yield environment as a % of site mean yield

(Brackets indicate number of trials)

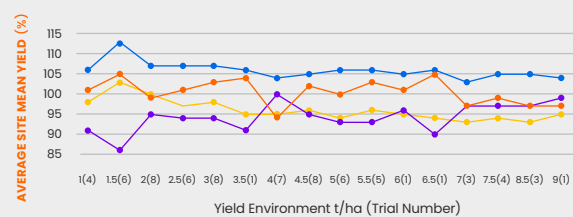
(Data accessed from the NVT Online website on 06/02/2020)

VICTORIA



2015-19 VIC main season NVT MET yield performance, represented annually as a % of average site mean yield

(Data accessed from the NVT Online website on 06/02/2020)



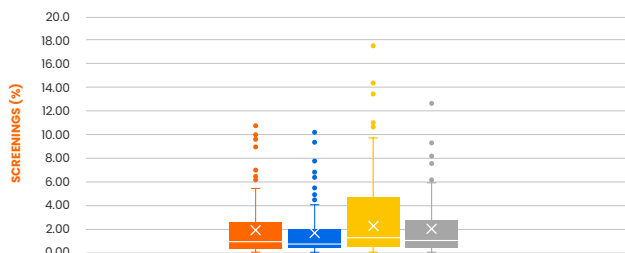
2015-19 VIC main season NVT MET yield performance, represented by yield environment as a % of site mean yield

(Brackets indicate number of trials)

(Data accessed from the NVT Online website on 06/02/2020)

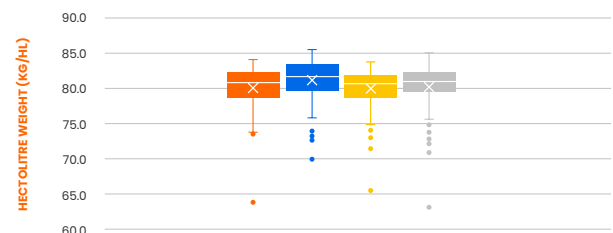
GRAIN QUALITY

Screenings



2016-19 NVT Screenings (%)
(Data accessed from the NVT Online website on 12/03/2020)

Hectolitre Weight



2016-19 NVT Hectolitre Weight (kg/hl)
(Data accessed from the NVT Online website on 12/03/2020)

CLEARFIELD® PLUS PRODUCTION SYSTEM

CHIEF CL PLUS[®] possesses two genes which confer tolerance to label rates of the Intervix[®] herbicide.

Intervix[®] is a member of the Group B – imidazolinone chemical family. Intervix[®] is a post-emergent herbicide providing control of many major grass and broadleaf weeds present in broadacre cropping systems.

These weeds include brome grass, barley grass, wild oats, indian hedge mustard, muskweed, oats, wheat and barley

(non-Clearfield[®]), wild radish, wild turnip and suppression of annual ryegrass.

For full product, plant back and application details please refer to the Intervix[®] product label available.

<https://bit.ly/2HCCQ1p>



SEED AVAILABILITY

Seed is available through your local reseller or Seedclub member.

For more information please contact:

SA: Josh Reichstein ☎ 0422 235 537 @ jreichstein@intergrain.com
 VIC/NSW: Katherine Munn ☎ 0436 801 161 @ kmunn@intergrain.com
 VIC: Ash Brooks ☎ 0476 020 451 @ abrooks@intergrain.com

PBR/EPR

CHIEF CL PLUS[®] is protected by Plant Breeder's Rights and is subject to an End Point Royalty of \$4.25/tonne GST Exclusive. CHIEF CL PLUS[®] is an InterGrain variety bred by Dan Mullan and the InterGrain wheat breeding team.

Disclaimer

All material contained or referred to in this publication is copyright. InterGrain is the owner of the copyright, unless otherwise indicated. Neither this publication nor any part of it may be reproduced in any way without the written consent of InterGrain. The information provided in this publication is considered true and correct at the time of printing although may be subject to change. This publication is intended as a general guide only for the purposes of providing a general understanding of InterGrain and its products. This publication should not be taken as detailed information regarding InterGrain or its products. InterGrain has taken all due care to ensure that the information provided is accurate at the time of publication; however, InterGrain does not guarantee or warrant the accuracy, completeness or currency of the information provided. Australian grain growers should regularly seek updated information and should rely on their own investigation and inquiries regarding the suitability of any product. Neither InterGrain nor its affiliates, agents or employees, shall be held liable for any loss or damage whatsoever arising out of or in relation to the contents of the publication, whether such loss or damage arises from the negligence or misrepresentation or any act or omission of InterGrain or its agents or employees. InterGrain does not accept liability for loss or damaged, suffered or incurred as a result of acting on or refraining to act as a result of any material contained in this publication.